

**E**arthConnection was built in 1991 to address the adverse ecological effects of our consumer society. It was founded by Sister Paula Gonzalez, SC, Ph.D., a biologist, nationally recognized lecturer, author and retreat leader. The facility was made possible by many groups of volunteers who converted an oversized four-car garage into a 3,900-square-foot meeting and office space building.

Features of the facility include an experimental solar heating system, solar electricity, natural lighting, super-insulated walls and windows, floor tiles made of waste glass, a wall made of aluminum cans, and carpeting constructed from recycled plastic bottles.



EarthConnection  
370 Neeb Road  
Cincinnati, OH 45233  
513-451-3932



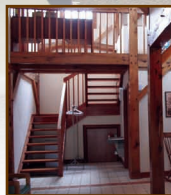
*Make Your "Connection" at*  
**EarthConnection**





Located on the west side of Cincinnati in Delhi Township, the EarthConnection building is available at reasonable rates for small and medium size groups planning days of reflection, seminars, office meetings and gatherings.

The land surrounding the EarthConnection building is landscaped with a variety of native species plantings. Walking trails wind through the woods just south of the facility. A working organic vegetable garden is planted and maintained by Hamilton County Master Gardeners. Produce is donated to the St. Leo Food Pantry in North Fairmount.



The main meeting room, EarthRoom, conveniently seats 60 people “theater style.” There are nine 6-foot tables for seating approximately 54 people depending upon the setup.



**Also available:**

- A small kitchen equipped with stove top (no oven), sink, refrigerator, microwave, dishes and silverware, glasses and mugs for 50 people
- Restrooms
- Library meeting room with a large table, seats 12
- SunSpace
- Internet access
- Ample parking is available in the College of Mount St. Joseph parking lot north of EarthConnection, with three steps from the lot to the EarthConnection walkway. Additional parking in the EarthConnection lot is best suited for the handicapped, with five to seven spaces available and no steps into the building.



**Please Note:**

- EarthConnection is a self-service institution. Rental users are responsible for their own setup, takedown, cleanup after the event, and removing all accumulated trash.
- We provide dish service for up to 50 in the hope that users will not use throwaway dishes and utensils. There is a household-size dishwasher to help in the clean up after your meal/meeting.
- To reduce the use of bottled water, EarthConnection features a filter on the kitchen sink for those who prefer filtered water.

For more information, rates, or to schedule a tour of EarthConnection, contact Winnie Brubach, SC (513) 451-3932 or e-mail at [wyn0131@aol.com](mailto:wyn0131@aol.com).

**For your catering needs...**



Sanese Services at The College of Mount St. Joseph excels in creating signature food combinations that will make any event special. We excel in full-service, personalized catering events for those extra-special occasions, and “no-interruptions” business luncheons. We use compostable papergoods and purchase seasonal, more sustainable foods through local farmers when possible. Using high-quality, fresh ingredients we will assist you in making your event memorable and more importantly, stress-free. Give us a call at (513) 244-4633 and ask for Lindsay Tam or Greg Kathman.